

# SHAPE THE FUTURE OF HEALTHCARE WITH US

*as an Allied Health or  
Pharmacy Professional*



# SHAPE THE FUTURE OF CARE

Woodlands Health provides care to residents in northwestern Singapore, through our new Campus featuring a fully integrated acute and community hospital, specialist outpatient clinics, intermediate and long-term care facilities, and green healing spaces.

At Woodlands Health, we offer a range of acute, sub-acute, rehabilitative and transitional care services, working closely with our partners to provide seamless care within and beyond our Campus.

Our Campus is set to open progressively from the end of 2023, and in the lead-up, we are expanding our team, inviting those who are passionate to shape the future of healthcare to join us in this journey.

Learn more about us at [www.whc.sg](http://www.whc.sg)

“  
Allied Health professionals play a critical role as part of the multi-disciplinary healthcare team at Woodlands Health. We strive to deliver better care, faster and smarter, so as to achieve the best health outcome for our patients, their caregivers and the community. Do join us and be part of a diverse, innovative and supportive healthcare family where team members find joy in work and have a rich and fulfilling career.

”

## Mr Eric Ho Chun Keong

*Director, Allied Health  
Director, Regional Health Office*



“

As stewards of medication use, we, at Woodlands Health Pharmacy, take the lead in imparting valuable drug and health information to our patients and fellow healthcare professionals to ensure that the drugs are used properly and safely. We strive to empower those we connect with and inspire in them the confidence to manage their medication. And we do so as a tight-knit team with strong camaraderie. So come join us on this fulfilling journey in patient care!

”

## Ms Yong Pei Chean

*Chief, Pharmacy*



# WELCOME TO THE COMMUNITY OF CARE

At Woodlands Health, we're building more than a team. We're bringing together a community of people to co-create a care environment for the future, with people who are competent, compassionate and deeply interested in providing the optimum health and well-being of those under our care.

As we prepare to move into our Campus, there will be diverse opportunities to shape our ethos, systems and processes by engaging your peers in the hospital and our partners in the community.

We will also support your professional development, through education and training, and encouraging the sharing of best practices among the care sector in Singapore and the world.

As a member of the Woodlands Health community, you will be a critical part of realising our care model where we will enhance people's health and well-being through a spectrum of healthcare needs and build bridges across multiple areas, including wellness promotion, chronic disease management, elective surgery, acute care, rehabilitation, dementia management, advance care planning, palliative medicine and end-of-life care.

## At Woodlands Health, you can contribute to various areas, including

- Patient care
- Clinical education
- Integration of smart technology
- Development of service lines
- Campus infrastructure planning

## YOUR BENEFITS



Medical coverage for outpatient care, specialist consultation and hospitalisation



Group personal accident and group term life insurance



Health screening and immunisation



Dental



Annual / medical / hospitalisation / family care / compassionate / marriage / maternity / paternity leave



## TOGETHER IN CARE

The Woodlands Health family has provided a nurturing environment for me to hone my craft, as well as inculcating patient-centred core values that has allowed me to become an empathetic healthcare professional. We are also continually encouraged to explore new directions and protocols, which aids us in becoming more effective.

**Joel Sherwyn Soh**  
Senior Physiotherapist

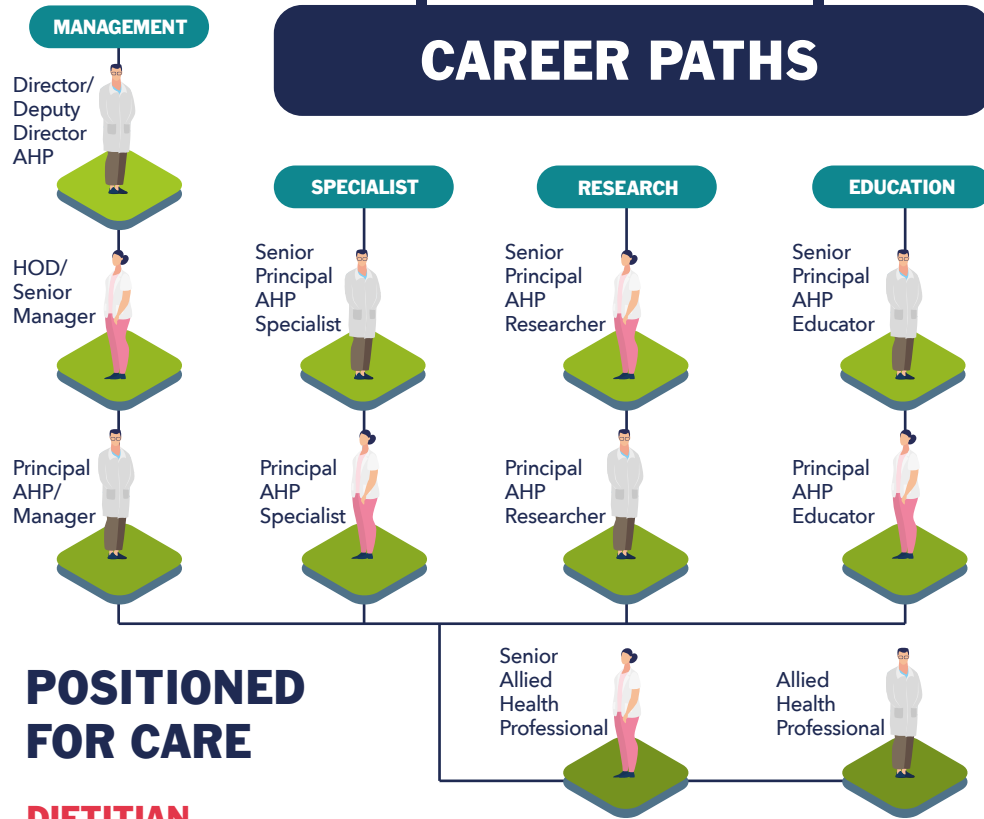
With Woodlands Health, I've had the opportunity to gain experience in a variety of pharmacy duties and settings. It's also wonderful to work within a culture where leaders encourage teams to care about each other and about how we can provide our patients with better services. I'm currently at an Urgent Care Centre, which has helped me learn how to run a pharmacy independently, and sharpened my problem-solving and leadership skills.

**Hemavathi D/O Sundaramoorthy**  
Pharmacy Technician

It is tremendously encouraging to work at Woodlands Health, as it truly values its employees, helping us reach our individual goals, be it professionally or personally. We also have a management team that cares. When we faced the tough challenge of COVID-19, they sent over tokens and gifts, lifting our morale.

**Tamrean Hafeez**  
Medical Technologist

# CAREER PATHS



## POSITIONED FOR CARE

### DIETITIAN

This role performs comprehensive nutrition assessment and provides personalised medical nutrition therapy to patients during their stay in the hospital, at outpatient settings and in the community. You will also support public outreach initiatives to promote healthy living in the community.

### MEDICAL SOCIAL WORKER

This role involves providing bio-psychosocial assessment and intervention in the management for the patients and supporting their next of kin in the continuum of care within Woodlands Health and into the community.

### PHLEBOTOMIST

This role collects blood specimen from patients and is involved in the pre-analytical process. You will be offered basic training in venepuncture technique and basic knowledge in human anatomy and infection control.

### DIETETICS ASSISTANT

This role supports dietitians in performing nutrition assessment and reviewing nutrition care plan at inpatient settings. You will also support dietitians in meal arrangement, producing patient education materials and organising talks or workshops.

### SENIOR SPEECH THERAPIST

This role would be ideal for individuals who are interested to work in the acute and community hospital settings. Candidates with experience in the following areas would be preferred: conducting instrumental assessments (VFSS and/or FEES), management of voice disorders, management of patients in high dependency/ICU settings, management of patients with tracheostomy and/or laryngectomy. This role will also involve taking on an educator role for new hires, juniors and/or students.

### CLINICAL PSYCHOLOGIST

This role involves providing psychological assessment, individual and group intervention in the management of patient care within a multi-disciplinary group setting. Supervision is provided, especially for cases with multiple complexities. In addition to skill sets in therapy interventions, you are expected to have some exposure/experience in conducting psychometric testing.

### MEDICAL TECHNOLOGIST

This role involves carrying out a range of laboratory tests on tissue samples and fluids to help the clinicians diagnose and treat diseases. Your work is extremely important to many departments such as the Emergency Department, Operating Theatre etc. by producing high quality test results including blood transfusion testing.

### PHARMACIST

This role involves providing pharmaceutical care (including medication counselling and medication reconciliation) to patients in inpatient and outpatient settings, and giving drug information to other healthcare professionals. You will identify, resolve and prevent drug-related problems; recommend and monitor patient-specific drug therapy, assure safe and effective alternatives as appropriate, and document the outcome; as well as oversee drug distribution.

### PHARMACY TECHNICIAN

This role involves supporting the pharmacist in processing medication orders for inpatient and outpatient dispensing; compounding medications according to prescriptions; and handling billing and stock management.

### PHYSIOTHERAPIST

This role would require experience and knowledge in managing patients with various medical conditions across inpatient, outpatient, community and preventive care settings. You should have relevant expertise in your area of specialisation as well as be able to assist in general rehabilitation and hospital operations relevant to your area.

### PHYSIOTHERAPIST (COMMUNITY)

This role is ideal for a professional interested in community-based rehabilitation including transitional care, early supported discharge, ageing-in-place strategies, and community wellness programmes (for example, health literacy, active lifestyle).

### RADIOGRAPHER

This role involves performing General Radiography, Advanced Imaging and image-guided procedures to patients in outpatient, inpatient, and emergency settings. You will produce high quality diagnostic images that are appropriate to clinical needs while upholding radiation safety standards for the patients.

### RESPIRATORY MEDICAL TECHNOLOGIST

This role involves providing diagnostic assessments for patients in the Pulmonary Function Laboratory and the Sleep Laboratory within a multi-disciplinary group setting, under the supervision of sleep physicians and respiratory physicians. You will also be working closely with Respiratory Therapists in the same team in the delivery of quality respiratory care to all our patients.

Visit [www.whc.sg/joinus](http://www.whc.sg/joinus) to check vacancies and submit job application.

# OUR CLINICAL SERVICES

## DIVISION OF AMBULATORY & PRE-HOSPITAL CARE

- Radiology
  - Emergency Medicine
  - Laboratory Medicine & Pathology
  - NurseFirst
  - GPFirst
  - Urgent Care
- 

## DIVISION OF SURGERY

- Anaesthesia
  - Intensive Care Medicine
  - Otolaryngology (ENT)
  - Surgery
  - Orthopaedic Surgery
  - Ophthalmology
  - Dental Surgery
  - Neuro Surgery
- 

## DIVISION OF MEDICINE

- Medicine
  - Cardiology
  - Endocrinology
  - Gastroenterology & Hepatology
  - Infectious Diseases
  - Renal Medicine
  - Respiratory Medicine
  - Rheumatology
  - Occupational Medicine
  - Neurology
- 

## DIVISION OF INTEGRATED AND COMMUNITY CARE

- Integrated Care
- Geriatric Medicine
- Medical Psychiatry
- Palliative & Supportive Care
- Post-Acute and Rehabilitative Care
- Transitional Care

## JOIN US

To apply, or to learn more about developing your career at Woodlands Health, you may email us at: [careers@whc.sg](mailto:careers@whc.sg)

