

# SHAPE THE FUTURE OF HEALTHCARE WITH US

*as a Nurse*



## MESSAGE FROM CHIEF NURSE

“

WH Nursing Service is proud to be an integral component of the hospital's clinical services, providing quality care to patients and their families as well as promoting good health in the northwestern region. We envision our nursing family to be the most Committed, Competent, Confident and Cohesive, and we will design the best care and safety nets to prevent patients from falling through the cracks. I warmly welcome you to explore a colourful career with us.”

**Ms Pua Lay Hoon**  
Chief Nurse

## SHAPE THE FUTURE OF CARE

Woodlands Health provides care to residents in northwestern Singapore, through our new Campus featuring a fully integrated acute and community hospital, specialist outpatient clinics, intermediate and long-term care facilities, and green healing spaces.

At Woodlands Health, we offer a range of acute, sub-acute, rehabilitative and transitional care services, working closely with our partners to provide seamless care within and beyond our Campus.

Our Campus is set to open progressively from the end of 2023, and in the lead-up, we are expanding our team, inviting those who are passionate to shape the future of healthcare to join us in this journey.

Learn more about us at [www.whc.sg](http://www.whc.sg)





# WELCOME TO THE FUTURE OF CARE

At Woodlands Health, we're building more than a team. We're putting together a community of people to create the care environment of the future, with people who are competent, compassionate and deeply interested in changing how we ensure the optimum health and wellbeing of those under our care.

As we prepare to move into our Campus, there will be diverse opportunities to shape our ethos, systems and processes through engaging with your peers in the hospital and with our partners in the community.

We will also support your professional development, through education and training, and through encouraging the sharing of best practices among the care sector in Singapore and the world.

As a member of the Woodlands Health community, you will be a critical part of realising our concept that enhancing people's health and wellbeing requires us to pay attention to the spectrum of healthcare needs and build bridges across multiple areas, including wellness promotion, chronic disease management, elective surgery, acute care, rehabilitation, dementia management, advance care planning, palliative medicine and end-of-life care.

## At Woodlands Health, you can contribute to various areas, including

- Patient care
- Clinical education
- Integration of smart technology
- Development of service lines
- Campus infrastructure planning

## YOUR BENEFITS



Medical coverage for outpatient care, specialist consultation and hospitalisation



Group personal accident and group term life insurance



Health screening and immunisation



Dental



Annual / medical / hospitalisation / family care / compassionate / marriage / maternity / paternity leave



## TOGETHER IN CARE

Positivity is our guiding star at Woodlands Health. This inspires me to share with my fellow colleagues to develop a nursing model capable of delivering the best possible care. And, the spirit of teamwork here is so contagious that it spreads to everyone, ensuring seamless care and services where we believe better health starts with us.

**Geraldine Ng**

*Assistant Director of Nursing, currently nesting at Tan Tock Seng Hospital*

One thing that makes me so proud to be part of the Woodlands Health nursing family is our fantastic nursing leaders. That really stood out during the pandemic, when they took the time to visit and encourage us. Their caring attitude extends to organising interest groups and other activities to help us make new friends among our colleagues.

**Chan Ying Ying**

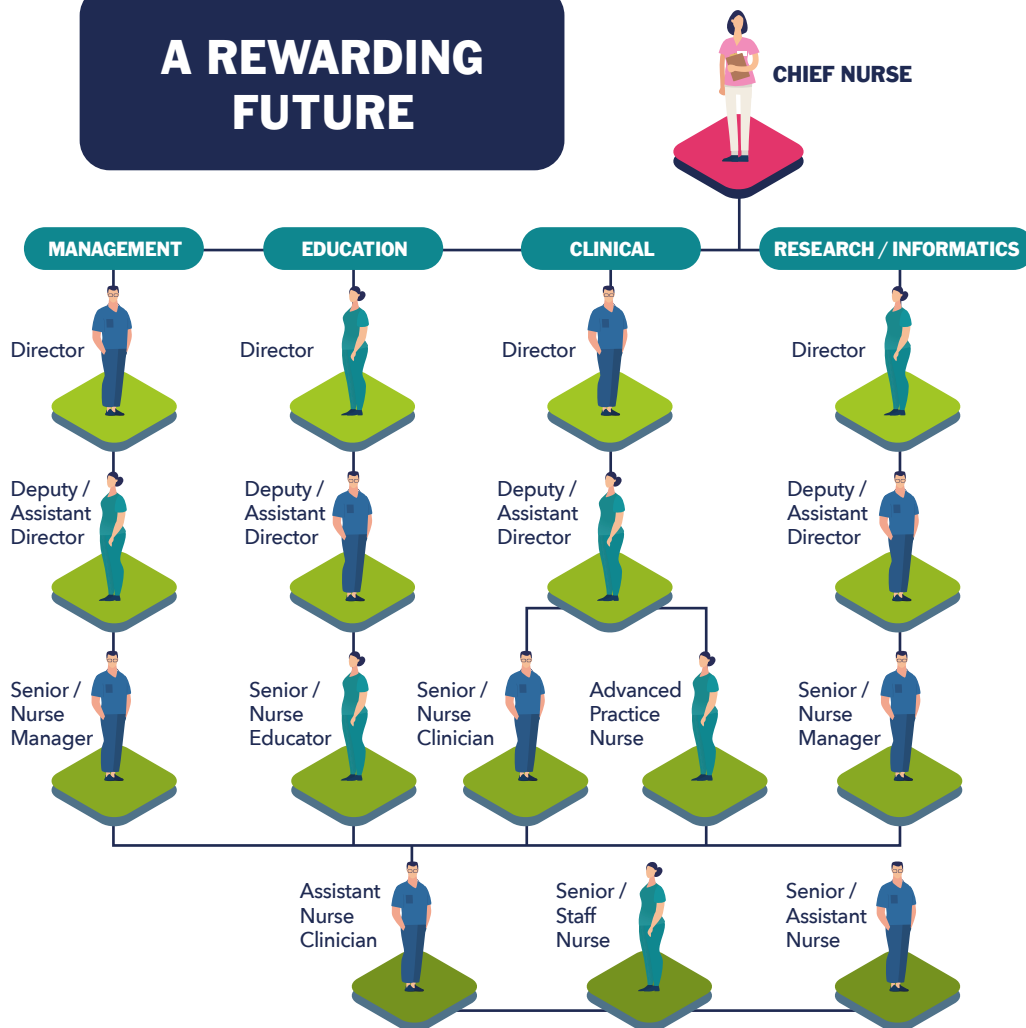
*Staff Nurse, currently nesting at Sengkang General Hospital*

I joined Woodlands Health immediately after receiving my diploma in 2017, and it has been a fulfilling journey. Professionally, I have had the opportunity to experience different nursing roles, and to pursue a degree. Beyond that, Woodlands Health will forever be close to my heart because of the people and a management team who is down-to-earth, humble and always there for us.

**Saivelan Mathivannan**

*Staff Nurse, currently nesting at Khoo Teck Puat Hospital*

# A REWARDING FUTURE



## NURSING CAREER PATHS

### MANAGEMENT

This role gives you operational oversight over the nurses under your purview, with the opportunity to set and improve service standards. You will be entrusted with the professional and personal development of your team, including creating a good working environment for them.

### EDUCATION

This role plans and manages educational and professional development initiatives to address nursing practice priorities. This will require you to undertake needs assessments, and develop, implement and evaluate nursing education programmes through collaborations with Advanced Practice Nurses, Nurse Clinicians and other healthcare professionals.

### CLINICAL

This role requires you to develop clinical standards, streamline clinical and care delivery processes, and monitor the performance of the nurses. You will also review audits and feedback on services, and implement appropriate training and improvement plans.

### RESEARCH

This role involves initiating and championing nursing research, including working with nurses to identify relevant research topics and resources. You will also facilitate the research efforts of nurses with relevant healthcare partners.

### INFORMATICS

This role supports, implements, facilitates and evaluates the use of clinical information systems to enhance nursing processes and workflows for better outcomes for patients. You will also participate in nursing innovation and improvement projects with the aim of maintaining safer patient care in an efficient manner.

### Requirements (Registered Nurse)

- Registered with the Singapore Nursing Board
- Minimum 2 years of experience in a similar capacity
- Possess a recognised diploma/degree in nursing and qualification in a relevant specialty
- Possess leadership and management skills
- Possess interpersonal and communication skills, with positive work attitude and a strong commitment toward service excellence

## OUR NURSING SERVICES

### DIVISION OF PRE-HOSPITAL, COMMUNITY AND AMBULATORY NURSING

- Community Nursing
- Emergency and Urgent Care
- Ambulatory Care

### DIVISION OF MEDICAL NURSING

- Inpatient General Medical
- Renal
- Intensive Care
- Post Acute and Rehabilitative Care (PARC)

### DIVISION OF SURGICAL NURSING

- Peri-operative Services
- Inpatient General Surgical
- Diagnostic Radiology
- Invasive Cardiac Laboratory
- Infection Control

# OUR CLINICAL SERVICES

## DIVISION OF AMBULATORY & PRE-HOSPITAL CARE

- Radiology
- Emergency Medicine
- Laboratory Medicine & Pathology
- NurseFirst
- GPFirst
- Urgent Care

## DIVISION OF SURGERY

- Anaesthesia
- Intensive Care Medicine
- Otolaryngology (ENT)
- Surgery
- Orthopaedic Surgery
- Ophthalmology
- Dental Surgery
- Neuro Surgery

## DIVISION OF MEDICINE

- Medicine
- Cardiology
- Endocrinology
- Gastroenterology & Hepatology
- Infectious Diseases
- Renal Medicine
- Respiratory Medicine
- Rheumatology
- Occupational Medicine
- Neurology

## DIVISION OF INTEGRATED AND COMMUNITY CARE

- Integrated Care
- Geriatric Medicine
- Medical Psychiatry
- Pallative & Supportive Care
- Post-Acute and Rehabilitative Care
- Transitional Care

## JOIN US

To apply, or to learn more about developing your career at Woodlands Health, you may email us at: [careers@whc.sg](mailto:careers@whc.sg)

